



Grow Life Care Franchisee Program

Grow Life Care Health Program



Grow Life Care Health Center is the most different health center in the field of ayurveda.in this range from Body check up, Physio therapy, Body Massage, Dental Care and grain is a lot of Herbal Remedies.some disease like Diabities, joint pain, Heart, Kidney, Liver, Gas, immunities, male & Female sex and lots of problems are treated.

Grow Life Care Franchisee & Health Program

Grow Life Care Health Check up

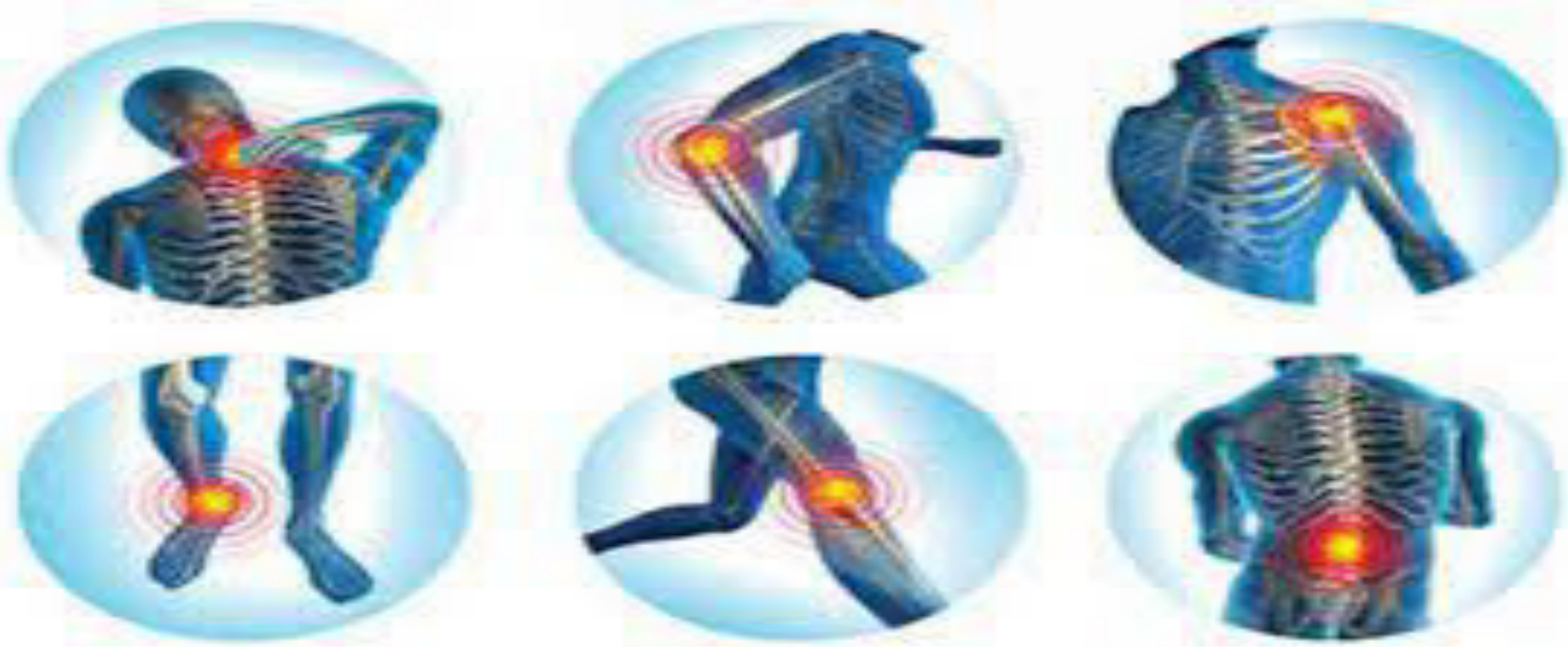


WHOLE BODY HEALTH CHECKUP PACKAGE

33 Investigations +
10 Doctor Consultations

Grow Life Care Health Center Program

Grow Life Care **300+** Therapy



Grow Life Care Health Center Program

Our Brand's



“Dream in to Reality”

www.growlifecare.biz

Health Disease

Ayurvedic

Scin Care

Hair Care

Herbals

Diabetic

Eye Care

Nutrition

**Sexual
Stamina**

**Personal
Care**

**Immunity
Booster**

**Food
Supplement**

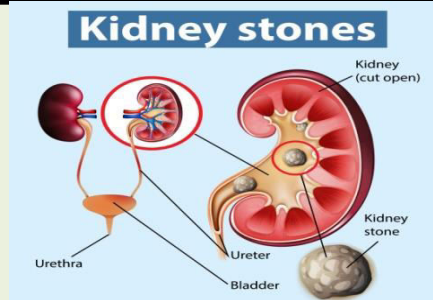
Weight Gain

Body Detox

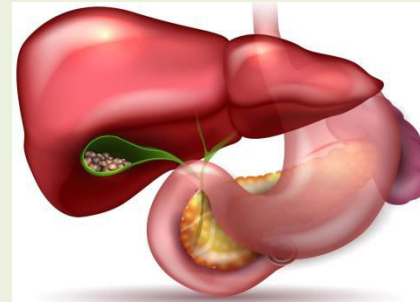
**Body
Therapy**

**Slimming
Care**

Disease..



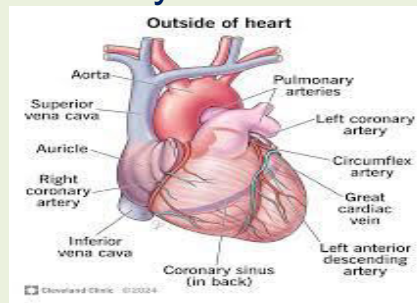
Kidney Stone



Gall Blader Stone



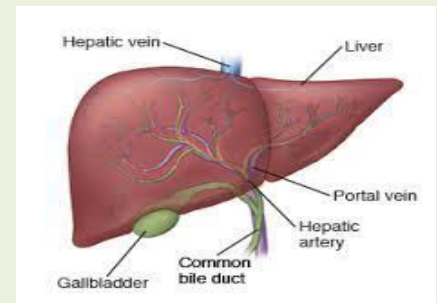
Piles



Heart Care



Cancer



Liver Care

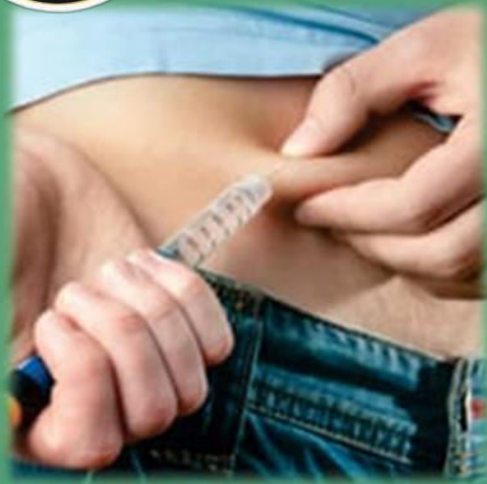


Grow

Importance of detoxifying your body

Grow Life Care Health Center Program

Grow Life Care **Diabetes**



100% आयुर्वेदिक कोर्स साइड इफेक्ट नहीं

सभी प्रमुख मेडिकल पर उपलब्ध

रुकिये....

आखिर कब तक
आप इंजेक्शन लेते रहेंगे...?

28

जडी बूटी वाला

भारत का पहला डायबिटीज कंट्रोल सिरप

डायबिट केयर

सिरप और कैप्सूल

जो डायबिटीज कंट्रोल करके उसके होने वाले
साइड इफेक्ट से बचाता है।

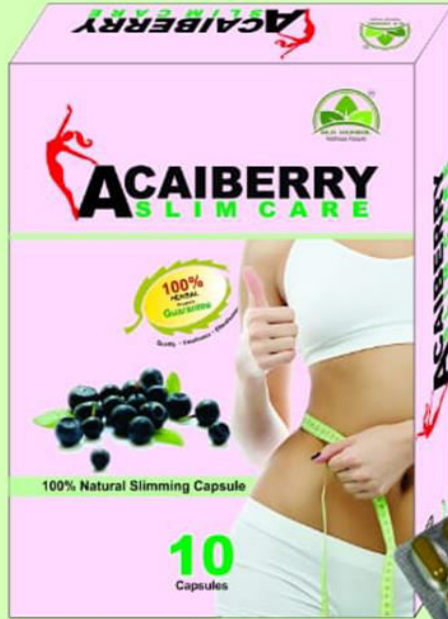
रिजल्ट 15 दिनों में

A product of GLA Affiliation



Grow Life Care Health Center Program

Grow Life Care Slimming



My Body
My **SlimCare**

A Total Fitness Solutions.



Grow Life Care Health Center Program

Grow Life Care **Female Sex**



छू लो आसमान को नयी उमंग के साथ.....

A product of GLA Affiliation

सभी प्रमुख
मेडिकल पर उपलब्ध

नारी पावर कैप्सूल व टैबलेट

औरतों की हर शारीरिक कमजोरी को दूर करके
शरीर के अंदर नयी स्फूर्ति का संचार करता है।

100% आयुर्वेदिक
कोई साइड इफेक्ट नहीं



Grow Life Care Health Center Program

Grow Life Care **Hair Fall**



A product of GLA Affiliation

अपनी नजरों के सामने अपने बालों को बढ़ते हुए देखें.....

भारत का एक मात्र

24

जडी बूटी वाला

क्षीरपाक विधि द्वारा निर्मित हेयर ऑयल।

केश शक्ति ऑयल

बालों का झड़ना, रूसी कम करके बालों को लम्बा और घना बनाता है।

Result In 10 Days

100% आयुर्वेदिक तेल
कोई साइड इफेक्ट नहीं



सभी प्रमुख

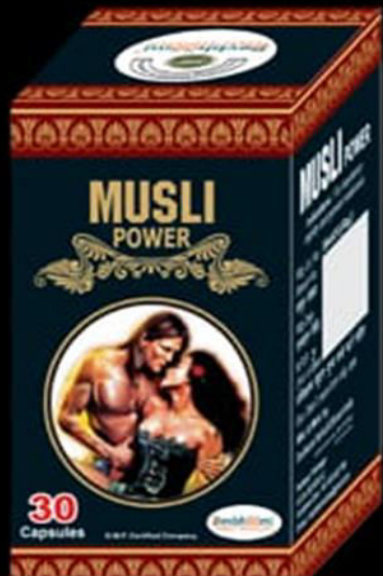
Grow Life Care Health Center Program

Grow Life Care Male Sex



ये दिल मांगे मोर शबलिमिटेड मजा

A product of GLA Affiliation



मूसली पाँवर

100% आयुर्वेदिक कोई साइड इफेक्ट नहीं



Result In 7 Days



सभी प्रमुख

Grow Life Care Health Center Program

Grow Life Care **Nari Care**

महिलाओं के लिए खास आयुर्वेदिक फार्मूला
आप को रखें जमाने से एक कदम आगे.....



नारी केयर सिरप

सफेद पानी अनियमितता चिड़चिड़ापन खून की कमी



आयुर्वेदिक कोई साइड इफेक्ट नहीं

Grow Life Care Health Center Program

INDEPENDENT
**“PRODUCT
SOLD”**



Franchisee Module

“Dream in to Reality”

www.growlifecare.biz

Franchisee Income III



Type of Income :

- **Sponsor Commission 4.00%**
- **Retaile Profit 5% - 50%**
- **Monthly Sale Commission 5%**
- **Cash Back Income 10%**

(Note : Minimum Franchisee Amount : 10000/-)

Big Opportunity

www.growlifecare.biz

Home Franchisee Rs. **10,000**

Sr. No.	Details
Product	10,000 Product Dispatch to Franchisee Holder Address
Instrument's	ID Card, T-Shirt , Training Certificate etc.
Margin/Profit	5.00% on Monthly Sale
Retaile Profit	5% to 50% on Retaile Profit
Fix Income	800 Monthly income up to 25 Month's
Extra Sale %	2% Extra Profit on 10,000 plus Sale
Shop Rent	Rent Paid by Franchisee Holder
Furniture	By Franchisee Holder

“Dream in to Reality”

www.growlifecare.biz

Home Franchisee Rs. **25,000**

Sr. No.	Details
Product	25,000 Product Dispatch to Franchisee Holder Address
Instrument's	ID Card, T-Shirt , Training Certificate etc.
Margin/Profit	5.00% on Monthly Sale
Retaile Profit	5% to 40% on Retaile Profit
Fix Income	2,000 Monthly income up to 25 Month's
Extra Sale %	2% Extra Profit on 25,000 plus Sale
Shop Rent	Rent Paid by Franchisee Holder
Furniture	By Franchisee Holder

“Dream in to Reality”

www.growlifecare.biz

Home Franchisee Rs. **50,000**

Sr. No.	Details
Product	50,000 Product Dispatch to Franchisee Holder Address
Instrument's	Gluko Meter, B.P. Machine, ID Card, T-Shirt , Training Certificate etc.
Margin/Profit	5.00% on Monthly Sale
Retaile Profit	5% to 50% on Retaile Profit
Fix Income	4,000 Monthly income up to 25 Month's
Extra Sale %	2% Extra Profit on 50,000 plus Sale
Shop Rent	Rent Paid by Franchisee Holder
Furniture	By Franchisee Holder

“Dream in to Reality”

www.growlifecare.biz

Home Franchisee Rs. 1 Lac

Sr. No.	Details
Product	1 Lac Product Dispatch to Franchisee Holder Address
Instrument's	Gluko Meter, B.P. Machine, ID Card, T-Shirt etc
Margin/Profit	5.00% on Monthly Profit
Retaile Profit	5% to 50% Retaile Profit
Fix Income	8,000 Fix Salary income up to 30 Month's
Extra Sale %	3% Extra Profit on 1 Lac plus Sale
Shop Rent	Rent Paid by Franchisee Holder
Furniture	By Franchisee Holder

“Dream in to Reality”

www.growlifecare.biz

Block Franchisee Rs. **2.5 Lac**

Sr. No.	Details
Product	2.5 Lac Product Dispatch to Franchisee Holder Address
Instrument's	Gluko Meter, B.P. Machine, ID Card, T-Shirt etc
Margin/Profit	6.00 % on Monthly Profit
Retaile Profit	5% to 50% Retaile Profit
Fix Income	15,000 Fix Salary income up to 32 Month's
Extra Sale %	3% Extra Profit on 2.5 Lac plus Sale
Shop Rent	Rent Paid by Franchisee Holder
Furniture	By Franchisee Holder

“Dream in to Reality”

www.growlifecare.biz

Tehsil Franchisee Rs. 5 Lac

Sr. No.	Details
Product	5 Lac Product Dispatch to Franchisee Holder Address
Instrument's	Gluko Meter, B.P. Machine, ID Card, T-Shirt etc
Margin/Profit	8.00% on Monthly Sale
Retaile Profit	5% to 50% Retaile Profit
Fix Income	25,000 Fix Salary income up to 36 Month's
Extra Sale %	3% Extra Profit on 5 Lac plus Sale
Shop Rent	Rent Paid by Franchisee Holder
Furniture	By Franchisee Holder

“Dream in to Reality”

www.growlifecare.biz

District Franchisee Rs. **10 Lac**

Sr. No.	Details
Product	10 Lac Product Dispatch to Franchisee Holder Address
Instrument's	Gluko Meter, B.P. Machine, ID Card, T-Shirt etc
Margin/Profit	8.50% on Monthly Sale
Retaile Profit	5% to 50% Retaile Profit
Fix Income	35,000 Fix Salary income up to 40 Month's
Extra Sale %	3% Extra Profit on 10 Lac plus Sale
Shop Rent	Rent Paid by Franchisee Holder
Furniture	By Franchisee Holder

“Dream in to Reality”

www.growlifecare.biz

Supper Mart Rs. **15 Lac**

Sr. No.	Details
Product	15 Lac Product Dispatch to Franchisee Holder Address
Instrument's	Gluko Meter, B.P. Machine, ID Card, T-Shirt etc
Margin/Profit	9.50% on Monthly Sale
Retaile Profit	5% to 50% open for Company member's
Fix Income	40,000 Fix Salary income up to 48 Month's
Extra Sale %	3% Extra Profit on 15 Lac plus Sale
Shop Rent	Rent Paid by Company
Furniture	By Company

“Dream in to Reality”

www.growlifecare.biz

C&F Franchisee Rs. **25 Lac**

Sr. No.	Details
Product	25 Lac Product Dispatch to Franchisee Holder Address
Instrument's	Gluko Meter, B.P. Machine, ID Card, T-Shirt etc
Margin/Profit	10.00% on Monthly Sale
Retaile Profit	5% to 50% open Retaile Profit
Fix Income	40,000 Fix Salary income up to 60 Month's
Extra Sale %	3% Extra Profit on 25 Lac plus Sale
Shop Rent	Rent Paid by Company
Furniture	By Company

“Dream in to Reality”

www.growlifecare.biz



Thanx to..

Do you have any inquiry & questions?

Care Mail : info@growlifecare.biz

Customer Care No : +91-

Branch Office : Nainital Road Rudrapur, Uttarakhand

“Dream in to Reality”

www.growlifecare.biz